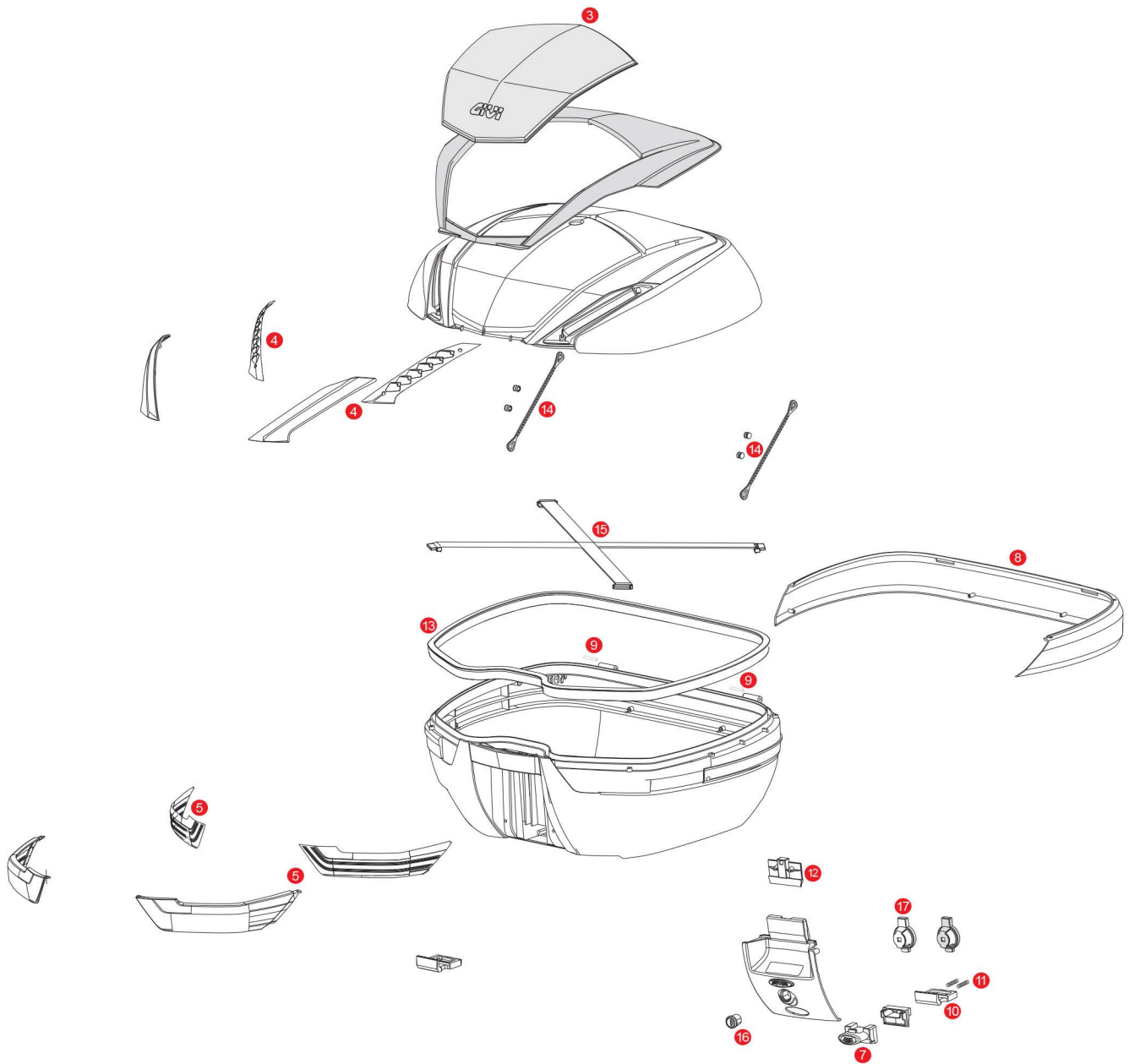


V47 / V47 TECH / V47NN / V47NN TECH / V47NNTFL



	<b>ZV47CNM</b>	V47 assembled top-shell
	<b>ZV47CNTM</b>	V47 Tech assembled top-shell
	<b>ZV47FNM</b>	V47 assembled bottom-shell black
	<b>ZV47FNTM</b>	V47 Tech assembled bottom-shell black
3	<b>Z4706OXCR</b>	Aluminium cover with anodizing cover/cap
	<b>Z4707R</b>	Cover with carbon texture finishing (for V47NN / V47NNT / V56NN / V56NNT)
4	<b>Z4703R</b>	Red reflectors with stop lamp holder (for V47)
4	<b>Z4703FR</b>	Smoked reflectors with stop lamp holder (for V47 Tech)
5	<b>Z4702R</b>	Red bottom frame with stop lamp holder (for V47)
5	<b>Z4702FR</b>	Smoked bottom frame with stop lamp holder (for V47 Tech)
	<b>Z3007NV47M</b>	Mounted lock set

	<b>Z3007NTV47M</b>	Mounted lock set (for V47 Tech)
7	<b>Z1983R</b>	Push button red
7	<b>Z645CR</b>	Opening push button chromed
8	<b>Z4701A900R</b>	Silver rear band
9	<b>Z590R</b>	Pin. Medium, 2 pcs.
10	<b>Z106</b>	Bolt
11	<b>Z109</b>	Long bolt springs
12	<b>Z3012R</b>	Closure system mounted on the lid
13	<b>Z790R</b>	Trim
14	<b>Z115R</b>	Stop bag opening yarn, 2 pcs.
15	<b>Z285NEWR</b>	Elastic belt
17	<b>Z4512R</b>	Plate below lock for Security Lock key