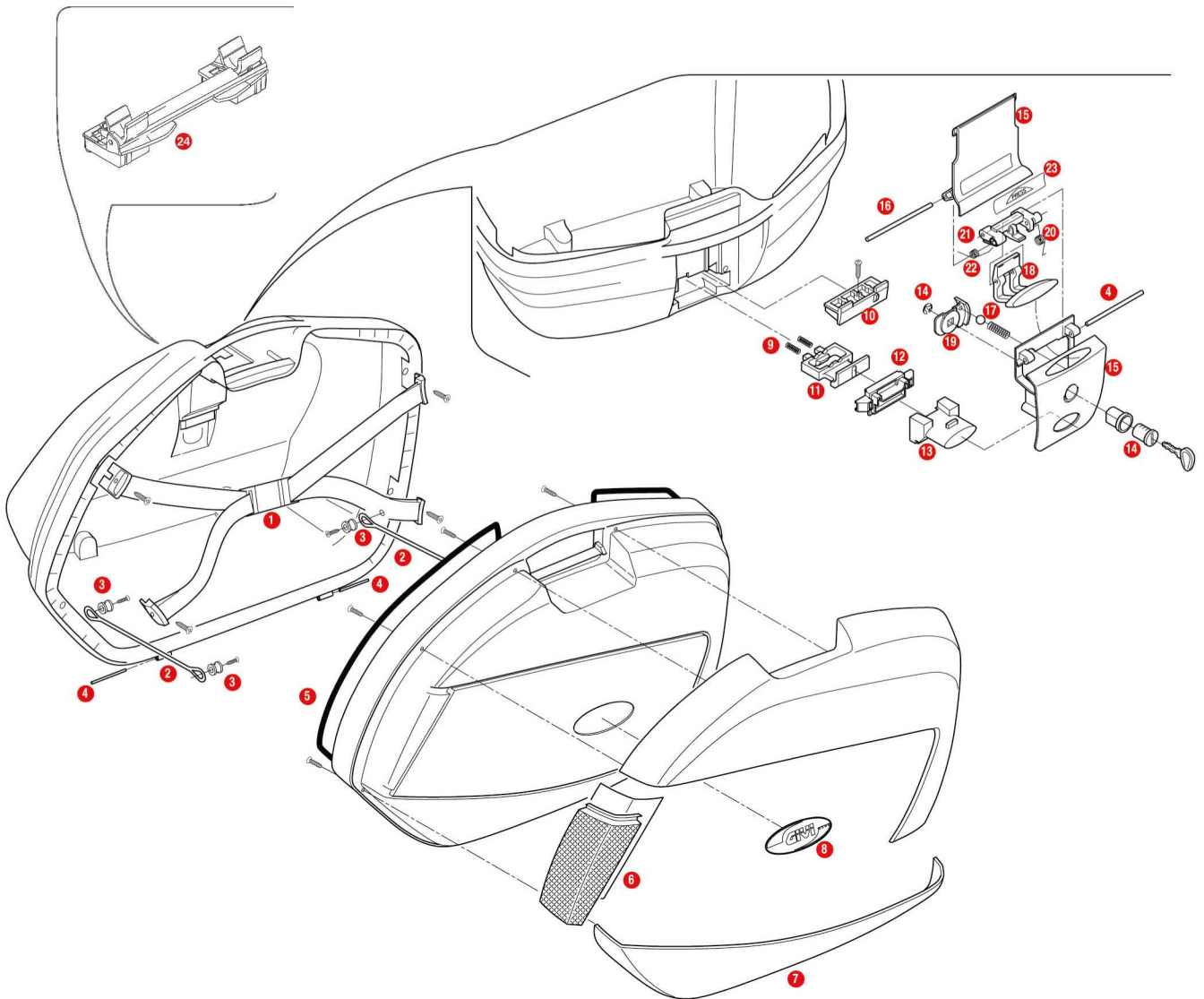


## V35 / V35 TECH



	<b>Z35FNMDX</b>	Right bottom-shell (mounted)
	<b>Z35FNMSX</b>	Left bottom-shell (mounted)
	<b>Z35CNMDX</b>	Right top-shell (mounted)
	<b>Z35CNMSX</b>	Left top-shell (mounted)
	<b>Z641NM2</b>	Lock set
	<b>Z641NTM</b>	Lock set (for TECH version)
1	<b>Z1462R</b>	Elastic belt
2	<b>Z115R</b>	Stop bag opening yarn, 2 pcs.
3	<b>Z112R</b>	Red pulley, 4 pcs.
4	<b>Z637R</b>	Pin, D. 04x75 mm, (1 piece)
5	<b>Z769</b>	Black lock lining
6	<b>Z1424R</b>	Reflectors (right and left)
	<b>Z1424TR</b>	Reflectors with silver bottom, right and left (for V35 TECH)
7	<b>Z1426R</b>	Low cover (right and left)
8	<b>ZV45</b>	V35/V46 logo
9	<b>Z109</b>	Long bolt springs

10	<b>Z1404R</b>	Push button guide 1pcs.
11	<b>Z106</b>	Bolt
12	<b>Z1405R</b>	Conical spacer, 1 pc.
13	<b>Z645R</b>	Push button red
14	<b>SL101</b>	Security lock set including cylinder, 2 keys, bush and under lock platelets
15	<b>Z641NR</b>	Hinge black
16	<b>Z721R</b>	Pin, D. 04x85 mm
17	<b>Z1384R</b>	Cylinder spring and steel spheres, 1 kit
18	<b>Z644R</b>	Opening push button, red, 1 pcs. (for top-case V46)
19	<b>Z640R</b>	Plate below lock for standard key
20	<b>Z647R</b>	Torsion spring, 1 pcs.
21	<b>Z643R</b>	Lock set element red, 1 pcs.
22	<b>Z632R</b>	Steel torsion spring
23	<b>Z409R</b>	Name holder, 1 pcs.
24	<b>Z1387R</b>	Pair of rotational rear clamps